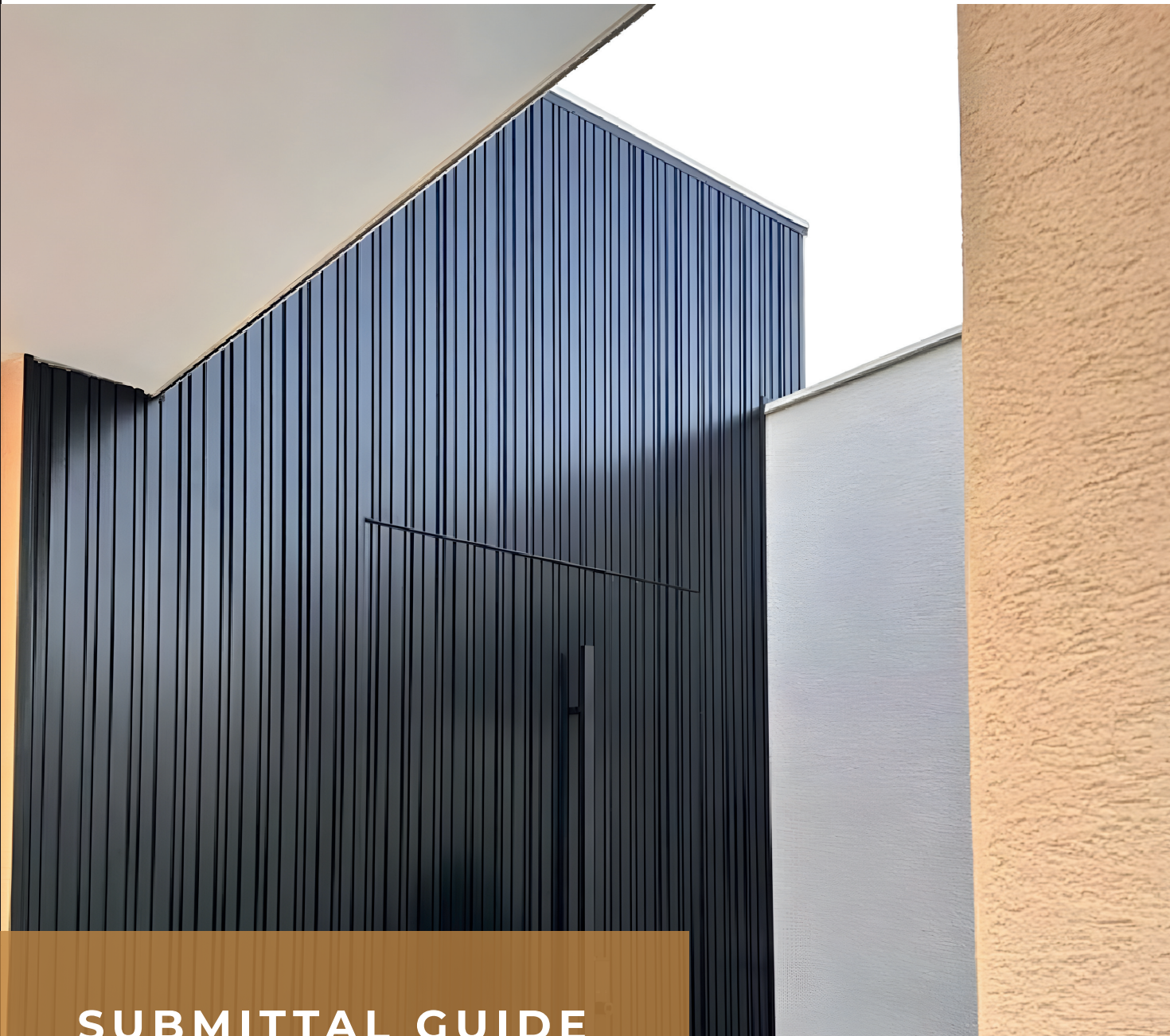


ALUMINUM CLADDING

• UNIVERSAL 3S



SUBMITTAL GUIDE

gtoaluminum.com



Table of Contents

AT A GLANCE	—————●	01
COMPANY OVERVIEW	—————●	02
COLOR GUIDE	—————●	03
PRODUCT OVERVIEW	—————●	04
PRODUCT DETAILS & SPECS	—————●	05-07
TECHNICAL DATA & CERTS	—————●	08-21



WELCOME!



GTO ALUMINUM

Interior & Exterior Wall Cladding

GTO Aluminum is a leading innovator in aluminum cladding, installation systems, profiles, and technology for both interior and exterior design. We are a pioneer in solutions for residential and commercial structures, offering products unlike anything else in the construction and design markets today!

Our versatile systems can be used for walls, facades, architectural details, and fencing, providing durable, low-maintenance, and stylish results for any project.

UNIVERSAL SYSTEM

Slide-on, tongue and groove installation, fully enclosed with no gaps. Perfect for applications requiring a more waterproof solution.

One portion of the universal profile would be drilled in with screws; as the next profile slides in on top and cover the screws of the one beneath it. This provides a very sleek, sealed, modern, and clean finish.

A SUPERIOR PRODUCT

THAT GIVES CUSTOMER MORE OPTIONS

Using aluminum is a better solution for an environmentally sustainable future. It does not rust or swell, it is impervious to termites, and it is fire resistant, making it great for covering fireplace or BBQ walls and ideal for high fire risk areas. It also requires ZERO maintenance and can handle every climate type. Aluminum is 100% recyclable, which means it is a forever product. It is so long-lasting that 75% of all aluminum ever created is still in use today! Remarkable.



Across all industries, innovators are looking to aluminum for greener, more sustainable solutions - and mostly cost efficiency.



Does not rust or swell.



Impervious to damage from pests such as termites.



Fire-resistant. Safe to cover fireplaces



100% Recyclable & Environmentally Sustainable.



Includes lifetime warranty against water and pests.



Does not require maintenance.

COLOR GUIDE

STANDARD

IN STOCK COLOR OPTIONS



Cedar



Pine



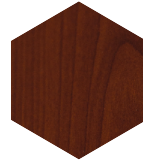
Gray



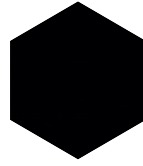
Walnut



Oak



Espresso



Charcoal

WALNUT COLLECTION



Cocoa



Grey Walnut



Dark Cherry



Toasted Walnut

GREECE COLLECTION



Natural Oak



Antique Oak



Teak

OAK COLLECTION



Warm Cedar



Birch



Rustic Chestnut



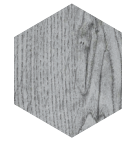
White Oak



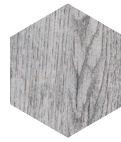
Sandstone Oak



Warm Honeywood



Silver Ash



Urban Ash



Honey Wood



Bourbon Wood



Driftwood



Driftwood



Hickory Oak



Toasted Chestnut



Heritage Oak



Royal Oak

MORE WOOD COLLECTION



Tuscan Walnut



Cognac Ashwood



Rustic Pecan



Desert Eucalyptus



Sienna Timber



Golden Teak



Hazelnut



Chestnut



Burnt Chestnut

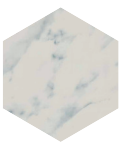


Warm Redwood

METAL & MARBLE COLLECTION

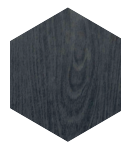


Rust



Marble

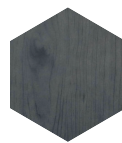
BLACK WOOD COLLECTION



Midnight Oak



Black Wood



Onyx Timber

CUSTOM



UNIVERSAL 3S

PRODUCT OVERVIEW

Description

Universal 3S is a versatile cladding profile, designed to deliver flexibility and creative freedom within a single system. Featuring three integrated slot sizes: 0.6 inch, 1.57 inch, and 1.2 inch. This enables pattern variation while maintaining a clean, seamless appearance. Measuring 4.5"W × 0.70"H × 19'L | 0.047" thickness.



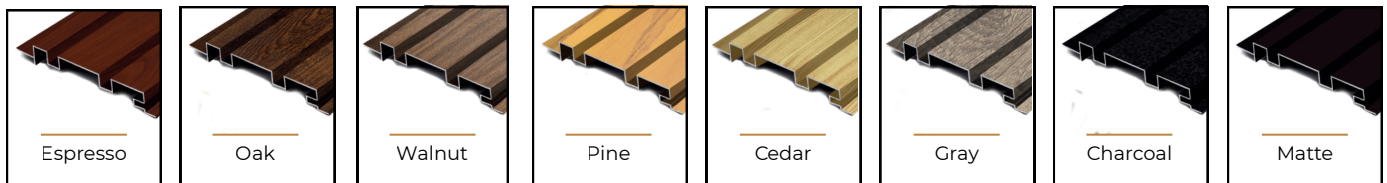
Ideal Applications:

Designed for interior and exterior applications, the Universal 3S is ideal for architectural surfaces, ceilings, and design-driven projects requiring visual variation and a modern aesthetic.

Key Features

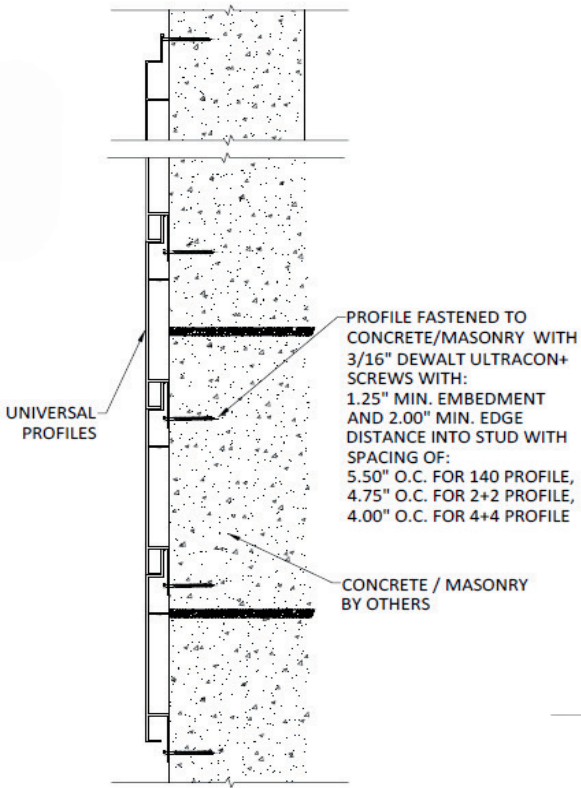
- Three integrated slot sizes within a single profile
- Seamless installation with concealed fasteners
- Clean, uninterrupted surface
- Available in a range of finishes and custom colors
- Engineered for durability in diverse climates

Standard Color Options

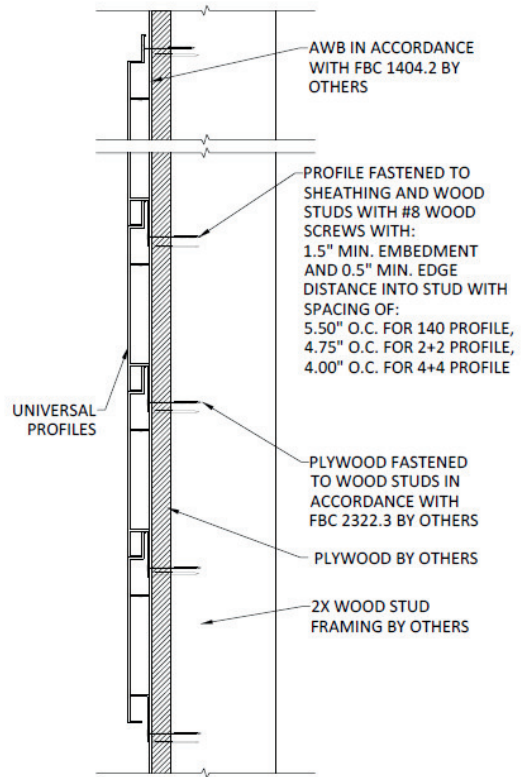




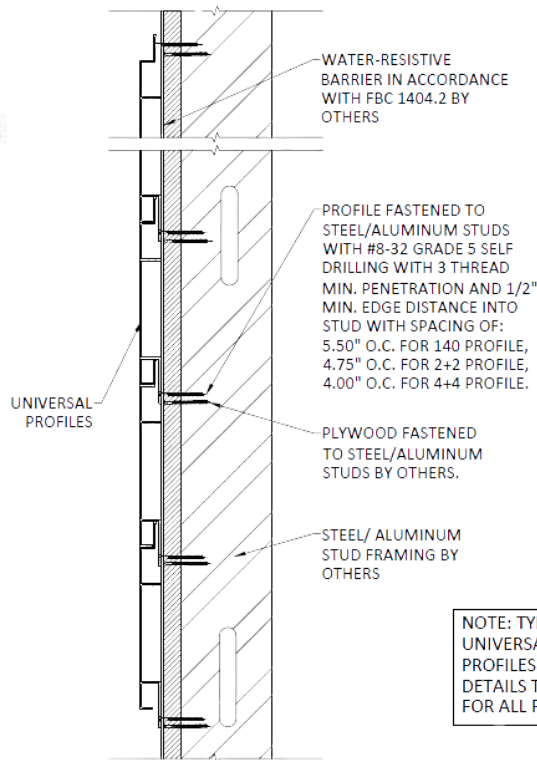
PRODUCT DETAILS & SPECIFICATIONS



**TYPICAL VERTICAL SECTION DETAIL
UNIVERSAL SYSTEM - CONCRETE/MASONRY
INSTALLATION**



**TYPICAL VERTICAL SECTION DETAIL
UNIVERSAL SYSTEM - 2 x WOOD FRAMING
INSTALLATION**

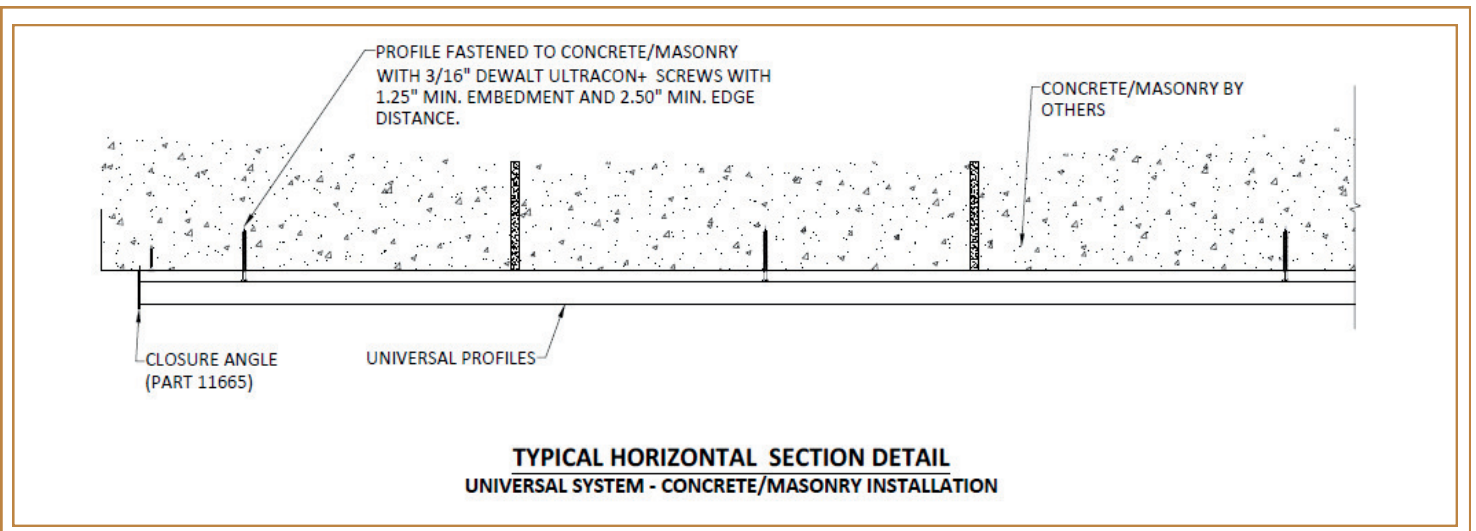
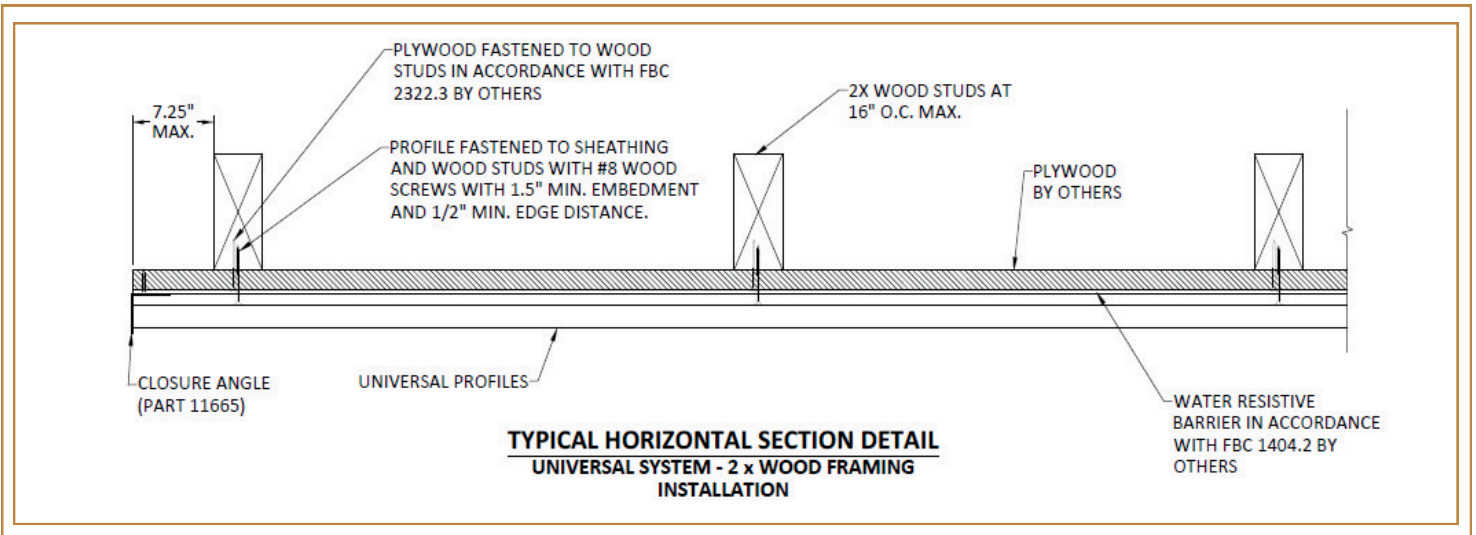
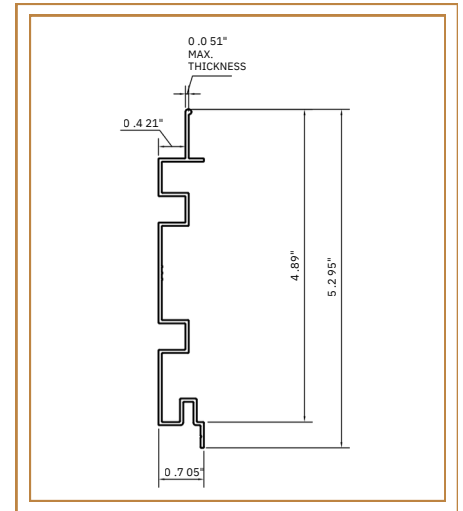
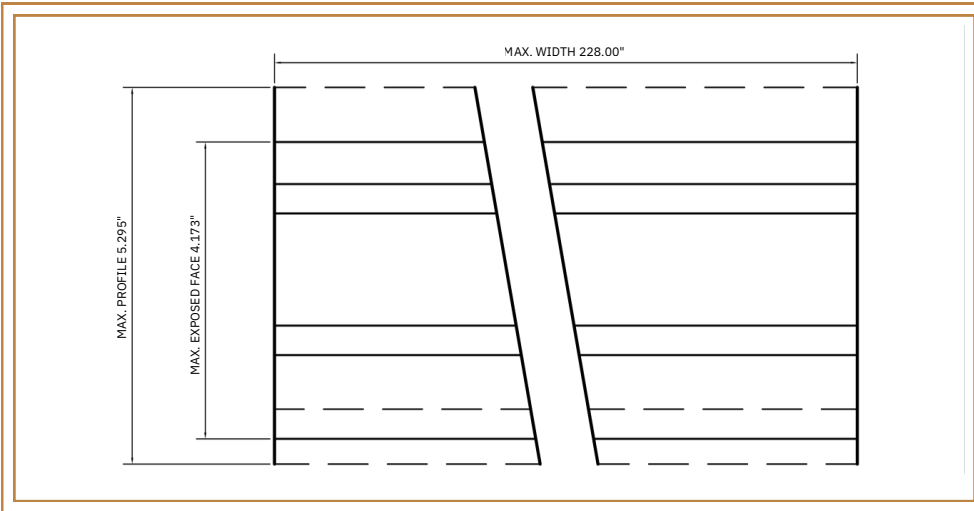


**TYPICAL VERTICAL SECTION DETAIL
UNIVERSAL SYSTEM - STEEL/ALUMINUM STUD
FRAMING INSTALLATION**

NOTE: TYPICAL UNIVERSAL 140 PROFILES SHOWN. DETAILS TYPICAL FOR ALL PROFILES.

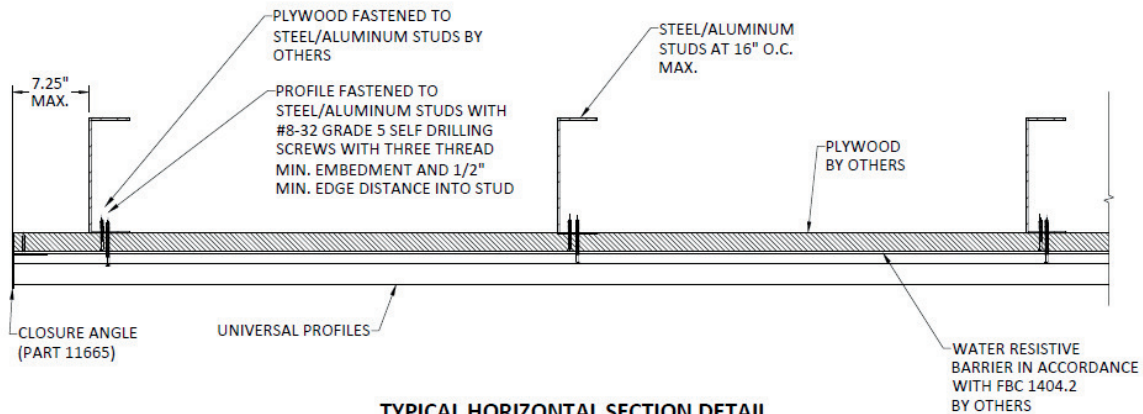


PRODUCT DETAILS & SPECIFICATIONS

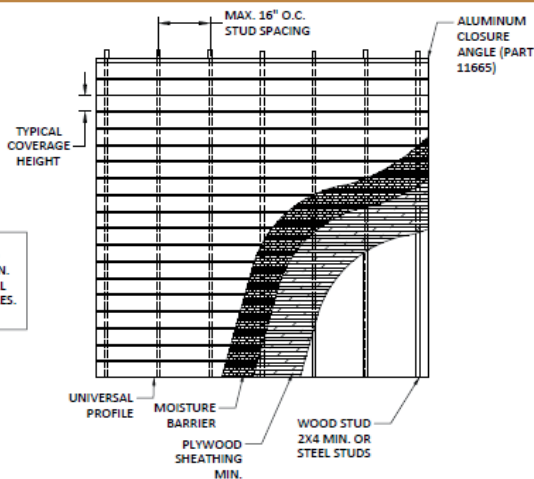




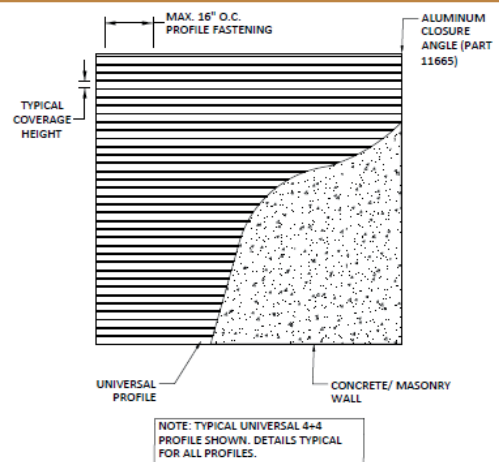
PRODUCT DETAILS & SPECIFICATIONS



TYPICAL HORIZONTAL SECTION DETAIL
UNIVERSAL SYSTEM - STEEL/ALUMINUM STUD
FRAMING INSTALLATION



SIDING INSTALLATION ELEVATION
UNIVERSAL SYSTEM - PLYWOOD SHEATHING OVER
2X4 MIN. WOOD STUD OR STEEL/ALUMINUM STUDS



SIDING INSTALLATION ELEVATION
UNIVERSAL SYSTEM - MASONRY/CONCRETE WALL
INSTALLATION

INSTALLATION NOTES

- ONE INSTALLATION FASTENERS IS REQUIRED AT EACH FASTENER LOCATION SHOWN.
- INSTALL INDIVIDUAL INSTALLATION ANCHORS WITHIN A TOLERANCE OF $\pm 1/2$ INCH THE DEPICTED LOCATION & SPACING IN THE ANCHOR LAYOUT DETAILS (I.E., WITHOUT CONSIDERATION OF TOLERANCES). TOLERANCES ARE NOT CUMULATIVE FROM ONE INSTALLATION ANCHOR TO THE NEXT.
- MINIMUM EMBEDMENT AND EDGE DISTANCE EXCLUDE WALL FINISHES, INCLUDING BUT NOT LIMITED TO STUCCO, FOAM, BRICK VENEER, AND SIDING.
- ANCHORS SHALL BE AS LISTED AND SPACED AS SHOWN ON DETAILS. EMBEDMENT TO BASE MATERIAL SHALL BE BEYOND WALL DRESSING.
- INSTALLATION FASTENERS AND ASSOCIATED HARDWARE MUST BE MADE OF CORROSION RESISTANT MATERIAL OR HAVE A CORROSION RESISTANT COATING.
- INSTALLATION FASTENERS SHALL BE INSTALLED IN ACCORDANCE WITH ANCHOR MANUFACTURER'S INSTALLATION INSTRUCTIONS, AND FASTENERS SHALL NOT BE USED IN SUBSTRATES WITH STRENGTHS LESS THAN THE MINIMUM STRENGTH SPECIFIED BY THE ANCHOR MANUFACTURER.
- INSTALLATION FASTENERS CAPACITIES FOR PRODUCTS HEREIN ARE BASED ON SUBSTRATE MATERIALS WITH THE FOLLOWING PROPERTIES:
 - 2X WOOD FRAMING - MINIMUM SPECIFIC GRAVITY OF 0.55.
 - CONCRETE - $f_c = 3000$ PSI
 - MASONRY - CMU PER ASTM C90 MIN. 2000 PSI
 - METAL - 18 GAUGE STEEL, MIN. $F_y = 33$ KSI
 - ALUMINUM - 1/8" MIN. 6063-T5



TECHNICAL DATA & CERTIFICATIONS

PART 1: GENERAL I.

1.1 RELATED SECTIONS

- **05 40 00** – Cold-Formed Metal Framing: Metal framing used to support aluminum cladding.
- **07 50 00** – Membrane Roofing: Used in conjunction with roof-related aluminum cladding.
- **07 60 00** – Flashing and Sheet Metal: Components used with aluminum siding.
- **07 46 16** – Aluminum Siding: Specifics for aluminum siding applications.
- **05 50 00** – Metal Fabrications: Involves metal workings that are necessary for structural supports and detailed metalwork integral to aluminum cladding installations.

1.2 REFERENCES

- **Miami-Dade County NOA Approval (NOA No. 24-0408.05)**
 - ☐ Meets Florida Building Code and High-Velocity Hurricane Zone standards. Large and small missile impact resistant, ensuring durability in extreme weather.
- **Fire Safety Compliance**
 - ☐ ASTM E84-24 tested for surface burning characteristics.
- **Class A Fire Rating:**
 - ☐ Flame Spread Index (FSI): 0 (Highest fire resistance rating).
 - ☐ Smoke Developed Index (SDI): 35 (Universal 4+4) & 30 (Click 180).
- **ISO Standards:**
 - ☐ ISO 9001:2015 - Quality Management System.
 - ☐ ISO 14001:2015 - Environmental Management System.
 - ☐ ISO 45001:2018 - Occupational Health & Safety Management System.
 - ☐ ISO 50001:2018 - Energy Management System.





TECHNICAL DATA & CERTIFICATIONS

PART 1: GENERAL II.

1.2 REFERENCES

- **European Standards / EU Standards:**

- EN 515, EN 573-3, EN 755-2, EN 755-9, EN 12020-2, EN 15088:2005.

- **Testing and Performance Certifications:**

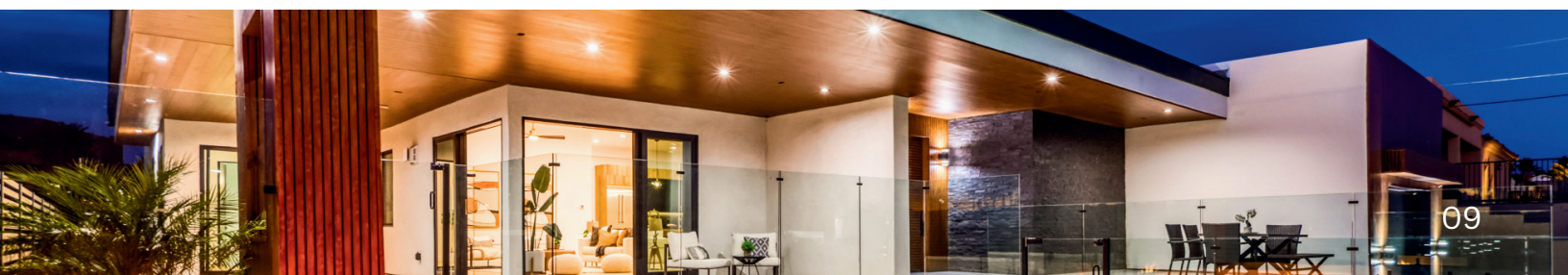
- Resistance to humid atmospheres containing Sulphur dioxide (ISO 22479).
- Acetic acid salt spray resistance (ISO 9227).
- Accelerated weathering test (Solar box, ISO 16474-2).
- Natural weathering test (Florida exposure, ISO 2810).
- Filiform corrosion test (ISO 4623-2).
- Q-SUN XE-3 HS – Accelerated Weathering Test by SUBLITEX.
- AAMA 2605 - highest standard for powder-coated aluminum, ensuring durability and color retention in extreme environments.

1.3 SUBMITTALS

- Product data: Submit manufacturer's product literature, specifications, and data sheets.
- Samples: Submit duplicate samples of cladding material, of color and profile specified.
- Shop Drawings: Indicate dimensions, profiles, attachment methods, schedule of wall elevations, trim and closure pieces, soffits, fascia, and related work.
- Certifications: Submit proof of compliance with specified tests and standards.

1.4 WARRANTY

- Provides a 20-year limited warranty from the date of Substantial Completion, covering manufacturing defects such as warping, corrosion, cracking, chalking, and color retention. The warranty applies only to the original owner and is not transferable.





TECHNICAL DATA & CERTIFICATIONS

PART 2: PRODUCTS

2.1 ALUMINUM CLADDING AND COMPONENTS

- **European Standards / EU Standards:**

- ☐ Profile: Universal 3S - 4.5"W Å~ 0.70"H Å~ 19'L | 0.047" thickness.
- ☐ Material: 6063 Alloy, T5, powder-coated, 18 gauge.
- ☐ Finish: Powder-coated in standard and custom colors.
- ☐ Colors: Espresso, Oak, Pine, Gray, Charcoal Black, Cedar, Walnut, and Matte Black; custom colors available for large orders.

2.2 ACCESSORIES

- **Aluminum Furring Strips** - spaced every 24"-36"

- ✓ **Ventilation:** The air gap created by the furring strips acts as a rainscreen, allowing moisture behind the cladding to dry and dissipating heat to reduce temperature buildup on the panels.
- ✓ **Drainage:** Any excess water entering the system can drain downward through the gap, preventing water accumulation.
- ✓ **Thermal Isolation:** The furring strips minimize direct heat transfer from the wall to the cladding, further limiting expansion.
- ✓ **Flexibility:** The furring strips allow the cladding system to move slightly as a single unit, accommodating minor thermal expansion without causing stress points or buckling. By spacing the furring strips every 24 inches, the panels are effectively divided into smaller sections. Each section undergoes less expansion compared to a single long, continuous panel, which helps prevent buckling.
- ✓ **Recommended Tools:** Use a 96 teeth aluminum blade for cuts.

PART 3: EXECUTION

3.1 INSTALLATION

Install according to manufacturer's instructions and approved shop drawings. Maintain joints true to line, tight-fitting, and with a seamless appearance.

3.2 CLEANING AND MAINTENANCE

Conduct freshwater cleaning and general maintenance quarterly. Use a soft cloth or brush with mild soap and warm water for routine cleaning. Avoid harsh chemical cleaners and maintain a log of all maintenance activities.





TECHNICAL DATA & CERTIFICATIONS

ICC-ES TEST REPORT



1.6 Witnessing

No representative of [GTO Aluminum USA](#) witnessed the testing reported herein.

1.7 Conditions of Testing

Unless otherwise indicated, all testing reported herein was conducted in a laboratory set to maintain temperature in the range of 65-80°F and humidity in the range of 45-60% RH. All test specimen materials were stored in the laboratory conditioning room of $73.4 \pm 5^\circ\text{F}$ and at a relative humidity of $50 \pm 5\%$ environment for no less than 24 hours prior to testing. The test specimens were conditioned for **16** days and obtained steady state.

2.0 Referenced Standards

ASTM E84-24 Standard Test Method for Surface Burning Characteristics of Building Materials.

3.0 Summary of Results

Flame Spread Index – 0

Smoke Developed Index – 35

3.1 General

This fire-test-response standard for the comparative surface burning behavior of building materials is applicable to exposed surfaces such as walls and ceilings. This standard is used to measure and describe the response of materials, products, or assemblies to heat and flame under controlled conditions, but does not by itself incorporate all factors required for fire-hazard or fire-risk assessment of the materials, products, or assemblies under actual fire conditions.

3.2 Test Specimens

The samples submitted by the manufacturer was identified as Universal 4+4 Cladding and was supplied in the form of (15) 0.047-in x 4.72-in x 288-in. They were received without damage.



TECHNICAL DATA & CERTIFICATIONS



3.3 Test Setup and Procedure

The product(s) were setup and evaluated in accordance with ASTM E84-24.

Substrate Used:	N/A
Mounting Method:	Standard
Support Used:	Rods
Side Exposed:	Flat Side
Adhesive Used & Coverage Rate (if Applicable):	N/A
Cement Board Used to Cover Sample (Y/N):	Yes
Sample Continuous or Sectioned:	Sectioned
No. & Size of Sections:	(15) 0.047-in x 4.72-in x 288-in
Lab Ambient Temp (°F):	71
Lab Ambient RH (%):	27
Date Tested:	1/24/2025



TECHNICAL DATA & CERTIFICATIONS



3.4 Test Results

TEST DATA

Time to Ignition (mm/ss):	01:52
Maximum Flame Spread (ft):	0.000
Time to Max Flame Spread (mm/ss):	00:00
Maximum Temperature (°F):	499
Time to Max Temperature (mm/ss):	09:28
Total Fuel Burned (cubic feet):	45.007
Flame Spread*Time Area (ft*min):	0.000
Smoke Area (%A*min):	22.693
Unrounded FSI:	0.000
Unrounded SDI:	33.573

TEST OBSERVATIONS

01:35	Observed charring and discoloration
07:00	Observed charring on surface increasing

POST-TEST OBSERVATIONS

0 – 8 ft	Section was charred and discolored
8 – 16 ft	Section was slightly discolored
16 – 24 ft	Section was untouched

Analysis on Classification Criteria

Based on Flame Spread Index and Smoke Developed Index when tested in accordance with ASTM E84 or UL 723. Three classes of interior finish are specified by the International Building Code (IBC) that describes a set of classification criteria required for interior wall and ceiling finish materials. The classification criteria for all three model codes is the same: ASTM E84 and UL 723 do not include classification criteria for the results obtained from testing.

Class	Flame Spread Index	Smoke Developed Index
A	0-25	0-450
B	26-75	0-450
C	76-200	0-450



TECHNICAL DATA & CERTIFICATIONS



4.0 Closing Statement This report contains only findings and results arrived at after employing the specific test procedures listed herein. It does not constitute a recommendation for, endorsement of, or certification of the product or material tested. Unless differently required, ICC-ES reports apply the "Simple Acceptance" rule, also called "Shared Risk approach", of ILAC-G8:09/2019, Guidelines on Decision Rules and Statements of Conformity. ICC-ES makes no warranty, expressed or implied, except that the test has been performed, and a report prepared, based upon the specimen specified by the client. Extrapolation of data, from the test data provided herein, to the batch or lot from which the specimens were obtained may not correlate and should be interpreted with extreme caution. ICC-ES assumes no responsibility for variations in quality, composition, appearance, performance, or other features of similar materials produced by the client, other persons, or under conditions over which ICC-ES has no control. ICC-ES has issued this report for the exclusive use of the client to whom it is addressed. Any use or duplication of this report shall not be made without their consent. This report shall only be reproduced in its entirety.

For ICC-ES, LLC:

Brent Mynar

 Tested by: Brent Mynar 01/27/2025
 Project Manager

Gabriel Parra

 Reviewed by: Gabriel Parra 01/27/2025
 Project Engineer

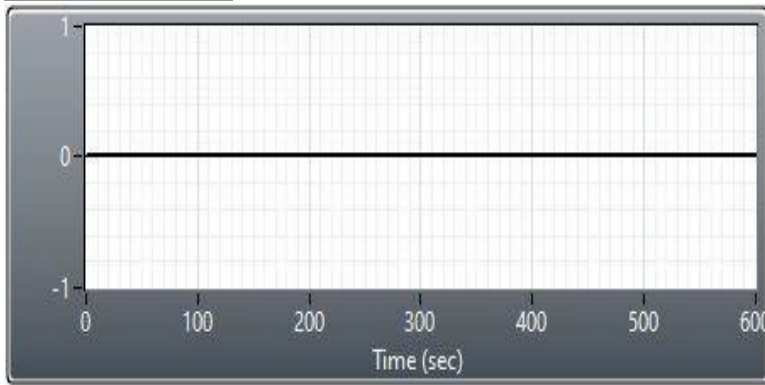


TECHNICAL DATA & CERTIFICATIONS

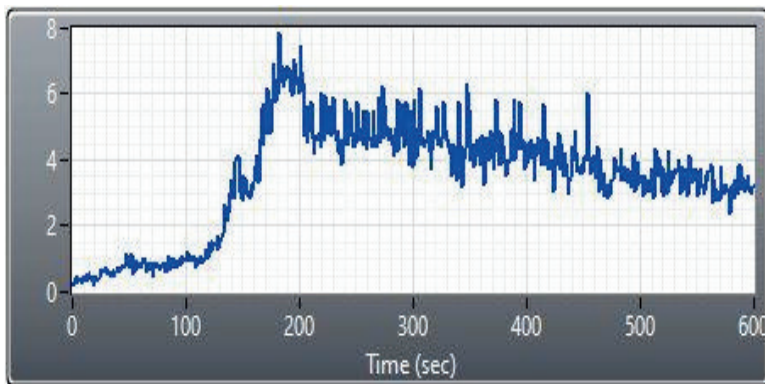


Appendix A - Data

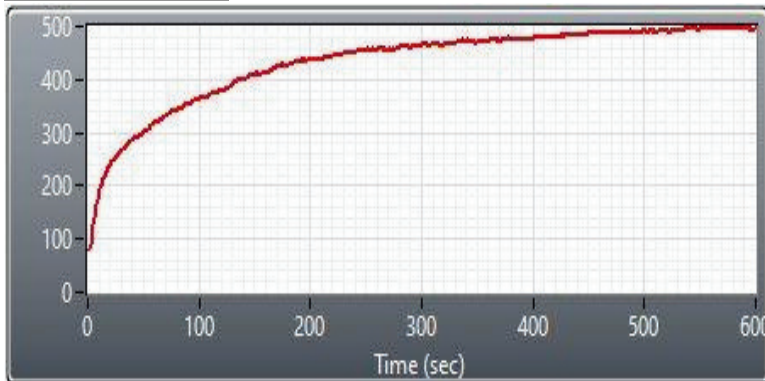
FLAME SPREAD



SMOKE (%A)



TEMPERATURE





TECHNICAL DATA & CERTIFICATIONS



AMERICAN WOOD COUNCIL

#8 Wood Screw into Mixed Maple-Southern Pine w/ 0.1457 in. of Gap Space. GTO Aluminum - Universal Aluminum Siding & CLICK Profile Siding System

Calculations herein are performed in accordance with the National Design Specification for Wood Construction - 2018, Chapter 12.3 and Technical Report 12 - General Dowel Equations for Calculating Lateral Connection Values, published by the American Wood Council

Wood Screw Type =	#8	Wood Screw
Wood Screw Length =	1.75	in
Wood Screw Embedment =	1.50	in
Wood Screw Thread Length =	1.17	in
D =	0.164	in , Dowel Diameter
D _m =	0.131	in , Dowel Diameter at max. stress in main member
D _s =	0.131	in , Dowel Diameter at max. stress in side member
F _b =	90,000	psi , Dowel bending strength

Wood Screw Withdrawal Calculations

Substrate:	Mixed Maple-Southern Pine
Tabulated withdrawal design value:	W = 141 lbs
Penetration Factor:	C _p = 1.17 in
Duration Factor:	C _D = 1.60
Withdrawal Allowable (W') = 263.0 lbs	

Tension Design Value

Concrete Anchor Calculations

Fastener type:	3/16" DeWalt UltraCon+
Reference:	Manufacture Published Data
Substrate:	3000 PSI Concrete or Greater
Minimum embedment:	1.00 in
Minimum Spacing:	3.00 in
Minimum edge distance:	2.50 in
Allowable Design Value:	W' _c = 155 lbs / anchor
Minimum anchor capacity:	150 lbs / anchor

Masonry Anchor Calculations

Fastener type:	3/16" DeWalt UltraCon+
Reference:	Manufacture Published Data
Substrate:	Hollow Block CMU (Per ASTM C-90)
Minimum embedment:	1.25 in
Minimum Spacing:	1.50 in
Minimum edge distance:	2.00 in
Allowable Design Value:	W' _m = 150 lbs / anchor



TECHNICAL DATA & CERTIFICATIONS



AMERICAN WOOD COUNCIL

Determine Screwed Connection Tensile Capacity: #8-32 Gr. 5 Self-Drilling Screw

Limit states for screw connection in tension per 2020 Aluminum Design Manual,

J.5.4.2: Pull-Over

Design Tension Strength and Allowable Tension Strength Shall be determined as follows:

$$\Phi = 0.5 \text{ (LRFD)}$$

$$\Omega = 3 \text{ (ASD building-type structure)}$$

Fastener Type: #8-32Gr. 5 Self-Drilling

J.5.5.1: Pull-Out

Thickness of member not in contact with head,	Le = 0.125 in.
Nominal diameter of the screw,	D = 0.164 in.
Threads per inch,	N = 32 per inch
Tensile yield of member not in contact with head,	Fty2 = 21000 psi
Tensile ultimate of member not in contact with head,	Ftu2 = 27000 psi
Thread stripping area of internal thread per thread,	TSA (I) = 0.01 in.
Coefficient for design per 2015 ADM,	Ks = 1.2 (Not applicable for Le > 0.125)
Thread stripping area of internal thread per unit engaged,	Asn = 0.04 in.

Nominal pull out strength,

Use This Value	For 0.060in. \leq Le \leq 0.125 in.	Rn = 516.6 lbs
Not Applicable	For 0.125 in. < Le < 0.25 in.	Rn = 516.6 lbs
Not Applicable	For 0.25. \leq Le < .375 in.	Rn = 78.3 lbs

Design Values,

ΦRn =	258.3 lbs
Rn/ Ω =	172.2 lbs

J.5.5.2: Pull-Over

- a) The nominal strength R_n for the limit state of pull-over for non-countersunk screws is:

$$R_n = C_{pov} t_1 F_{tu1} (D_{ws} - D_h) \quad (J.5-8)$$

Coefficient for valley vs crown fastening,	Cpov = 1
Nominal thickness of part in contact with screw head,	t1 = 0.0472 in.
Tensile ultimate of part in contact with screw head/washer,	Ftu1 = 27000 psi
Larger diam. of screw head or washer,	Dws = 0.438 in.
Nominal diameter of hole in material under screw head,	Dh = 0.1405 in.

Nominal Strength,

Rn =	379.134 lbs
------	-------------

Design Values,

ΦRn =	189.567 lbs
Rn/ Ω =	126.378 lbs



TECHNICAL DATA & CERTIFICATIONS



AMERICAN WOOD COUNCIL

E4.4.1 Pull-Out Strength: #8-32 Gr. 5 Self-Drilling Screw - Frame Installation

Reference: AISI Cold Formed Steel Specifications, E4.4.1

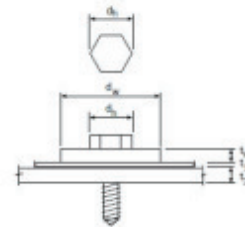
E4.4.1 Pull-Out Strength [Resistance]

The nominal pull-out strength [resistance], P_{not} , shall be calculated as follows:

$$P_{not} = 0.85 t_c d F_{u2} \quad (\text{Eq. E4.4.1-1})$$

Same formula is referenced in AAMA TIR A9-14 for thickness of 1/4" or less.

Figure 1: Typical Connection Detail



Where,

Nominal screw diameter,

$$d = 0.164 \text{ in.}$$

Thickness of member in contact with screw head,

$$t1 = 0.051 \text{ in.}$$

Thickness of member not in contact with screw head,

$$t2 = 0.0478 \text{ in.}$$

Tensile strength of mem. not in contact with screw head,

$$F_{u2} = 58000 \text{ psi}$$

Eq. E4.4.1

$$P_{not} = 386.473 \text{ lbs}$$

Per ASD,

$$P_{ns}/\Omega = 128.824 \text{ lbs, } \Omega = 3$$

Per LRFD,

$$\Phi P_{ns} = 193.236 \text{ lbs, } \Phi = 0.5$$

E4.4.2 Pull-Over Strength

Reference: AISI Cold Formed Steel Specifications, E4.4.2

$$P_{nov} = 1.5 * t1 * d'w * F_{u1} \quad (\text{Eq. E4.4.2-1})$$

Where,

Thickness of member in contact with screw head,

$$t1 = 0.0472 \text{ in.}$$

Tensile strength of mem. in contact with screw head,

$$F_{u1} = 27000 \text{ psi}$$

Effective Pullover Diameter,

$$d'w = 0.438 \text{ in.}$$

Eq. E4.4.2-1

Per ASD,

$$P_{ns}/\Omega = 279.094 \text{ lbs, } \Omega = 3$$

Per LRFD,

$$\Phi P_{ns} = 418.64 \text{ lbs, } \Phi = 0.5$$

Check Tensile Capacity of Screw.

#8-32 Gr. 5 Self-Drilling Screw,

$$D = 0.164 \text{ in.}$$

$$P_{ns}/\Omega = 560 \text{ lbs, per AAMA TIR A9-14}$$

Design Value

$$T = 128.824 \text{ lbs}$$



TECHNICAL DATA & CERTIFICATIONS



Product Evaluation Report

Manufacture: Andersen Windows & Doors

Product : GTO Aluminum - Universal Aluminum Siding System & CLICK Profile Siding System

Manufacture Published Data

Ultimate and Allowable Load Capacities for UltraCon+ in Normal-Weight Concrete^{1,2,3,4}

Nominal Anchor Diameter d in.	Minimum Embed. Depth h _{min} in. (mm)	Minimum Edge Distance in. (mm)	Minimum Spacing in. (mm)	Minimum Concrete Compressive Strength													
				f _c = 2,500 psi (17.3 Mpa)				f _c = 3,000 psi (20.7 Mpa)				f _c = 4,000 psi (27.6 Mpa)					
				Ultimate		Allowable		Ultimate		Allowable		Ultimate		Allowable			
				Tension lbs. (kN)	Shear lbs. (kN)	Tension lbs. (kN)	Shear lbs. (kN)	Tension lbs. (kN)	Shear lbs. (kN)	Tension lbs. (kN)	Shear lbs. (kN)	Tension lbs. (kN)	Shear lbs. (kN)	Tension lbs. (kN)	Shear lbs. (kN)		
3/16	1-3/4 (44)	1 (25)	1 (25)	1,080 (4.8)	305 (1.3)	270 (1.2)	75 (0.3)	1,145 (5.0)	325 (1.4)	285 (1.3)	80 (0.4)	1,245 (5.5)	325 (1.4)	310 (1.4)	80 (0.4)		
			1-1/8 (29)	1,190 (5.2)	305 (1.3)	295 (1.3)	75 (0.3)	1,255 (5.5)	325 (1.4)	315 (1.4)	80 (0.4)	1,370 (6.0)	325 (1.4)	340 (1.5)	80 (0.4)		
			2-1/4 (57)	1,365 (6.0)	600 (2.6)	340 (1.5)	150 (0.7)	1,440 (6.3)	635 (2.8)	360 (1.6)	160 (0.7)	1,570 (6.9)	635 (2.8)	395 (1.7)	160 (0.7)		
	1 (25)	2-1/2 (64)	3 (76)	1 (25)	580 (2.6)	435 (1.9)	145 (0.7)	110 (0.5)	615 (2.7)	460 (2.0)	155 (0.7)	115 (0.5)	670 (2.9)	460 (2.0)	170 (0.7)	115 (0.5)	
				1-3/8 (35)	815 (3.6)	455 (2.0)	205 (0.9)	115 (0.5)	860 (3.8)	485 (2.1)	215 (1.0)	120 (0.5)	940 (4.1)	485 (2.1)	235 (1.0)	120 (0.5)	
				1-3/4 (44)	1,365 (6.0)	600 (2.6)	340 (1.5)	150 (0.7)	1,440 (6.3)	635 (2.8)	360 (1.6)	160 (0.7)	1,570 (6.9)	635 (2.8)	395 (1.7)	160 (0.7)	
	1/4	1-3/4 (44)	2-1/2 (64)	1-1/8 (29)	1,465 (6.4)	1,200 (5.3)	365 (1.6)	300 (1.3)	1,550 (6.8)	1,265 (5.6)	390 (1.7)	315 (1.4)	1,690 (7.4)	1,265 (5.6)	425 (1.9)	315 (1.4)	
				2-1/4 (57)	1,465 (6.4)	1,200 (5.3)	365 (1.6)	300 (1.3)	1,550 (6.8)	1,265 (5.6)	390 (1.7)	315 (1.4)	1,690 (7.4)	1,265 (5.6)	425 (1.9)	315 (1.4)	
				1 (25)	580 (2.6)	640 (2.8)	145 (0.7)	160 (0.7)	615 (2.7)	680 (3.0)	155 (0.7)	170 (0.8)	670 (2.9)	680 (3.0)	170 (0.7)	170 (0.8)	
		1-3/8 (35)	2-1/2 (64)	3 (76)	1-3/8 (35)	1,220 (5.4)	735 (3.2)	305 (1.4)	185 (0.8)	1,290 (5.7)	775 (3.4)	325 (1.4)	195 (0.9)	1,405 (6.2)	775 (3.4)	350 (1.6)	195 (0.9)
					1-3/4 (44)	1,465 (6.4)	1,200 (5.3)	365 (1.6)	300 (1.3)	1,550 (6.8)	1,265 (5.6)	390 (1.7)	315 (1.4)	1,690 (7.4)	1,265 (5.6)	425 (1.9)	315 (1.4)
					1 (25)	580 (2.6)	640 (2.8)	145 (0.7)	160 (0.7)	615 (2.7)	680 (3.0)	155 (0.7)	170 (0.8)	670 (2.9)	680 (3.0)	170 (0.7)	170 (0.8)
1/4		1-3/4 (44)	1 (25)	1 (25)	1,265 (5.6)	340 (1.5)	315 (1.4)	85 (0.4)	1,360 (6.0)	370 (1.6)	340 (1.5)	95 (0.4)	1,525 (6.7)	370 (1.6)	380 (1.7)	95 (0.4)	
				1-3/4 (44)	1,265 (5.6)	385 (1.7)	315 (1.4)	95 (0.4)	1,325 (5.8)	415 (1.8)	340 (1.5)	105 (0.5)	1,525 (6.7)	415 (1.8)	380 (1.7)	105 (0.5)	
				3 (76)	1,720 (7.6)	420 (1.8)	430 (1.9)	105 (0.5)	1,850 (8.1)	450 (2.0)	465 (2.0)	115 (0.5)	2,075 (9.1)	450 (2.0)	520 (2.3)	115 (0.5)	
		1 (25)	2-1/2 (64)	4 (102)	1 (25)	770 (3.4)	495 (2.2)	195 (0.9)	125 (0.6)	830 (3.7)	530 (2.3)	210 (0.9)	135 (0.6)	930 (4.1)	530 (2.3)	235 (1.0)	135 (0.6)
					1-3/8 (35)	1,105 (4.9)	640 (2.8)	275 (1.2)	160 (0.7)	1,190 (5.2)	690 (3.0)	300 (1.3)	175 (0.8)	1,335 (5.9)	690 (3.0)	335 (1.5)	175 (0.8)
					1-3/4 (44)	1,975 (8.7)	645 (2.8)	495 (2.2)	160 (0.7)	2,120 (9.3)	690 (3.0)	530 (2.3)	175 (0.8)	2,380 (10.5)	690 (3.0)	595 (2.6)	175 (0.8)
	1-3/4 (44)	2-1/2 (64)	4 (102)	1-1/2 (38)	2,200 (9.7)	1,590 (7.0)	550 (2.4)	400 (1.8)	2,365 (10.4)	1,710 (7.5)	590 (2.6)	430 (1.9)	2,650 (11.7)	1,710 (7.5)	665 (2.9)	430 (1.9)	
				1-3/4 (44)	2,200 (9.7)	1,635 (7.2)	550 (2.4)	410 (1.8)	2,365 (10.4)	1,755 (7.7)	590 (2.6)	440 (1.9)	2,650 (11.7)	1,755 (7.7)	665 (2.9)	440 (1.9)	
				1 (25)	805 (3.5)	1,260 (5.6)	200 (0.9)	315 (1.4)	865 (3.8)	1,355 (6.0)	215 (1.0)	340 (1.5)	970 (4.3)	1,355 (6.0)	245 (1.1)	340 (1.5)	
1-3/8 (35)	2-1/2 (64)	4 (102)	1-3/8 (35)	1,755 (7.7)	1,635 (7.2)	440 (1.9)	410 (1.8)	1,885 (8.3)	1,755 (7.7)	470 (2.1)	440 (1.9)	2,115 (9.3)	1,755 (7.7)	530 (2.3)	440 (1.9)		
			1-3/4 (44)	2,290 (10.1)	1,635 (7.2)	570 (2.5)	410 (1.8)	2,460 (10.8)	1,755 (7.7)	615 (2.7)	440 (1.9)	2,650 (11.7)	1,755 (7.7)	665 (2.9)	440 (1.9)		
			1 (25)	805 (3.5)	1,260 (5.6)	200 (0.9)	315 (1.4)	865 (3.8)	1,355 (6.0)	215 (1.0)	340 (1.5)	970 (4.3)	1,355 (6.0)	245 (1.1)	340 (1.5)		

1. Tabulated Ultimate load values are for anchors installed in uncracked concrete. Concrete compressive strength must be at the specified minimum at the time of installation.
 2. Allowable load capacities listed are calculated using an applied safety factor of 4.0. Consideration of safety factors of 10 or higher may be necessary depending on the application, such as life safety or overhead.
 3. Linear interpolation may be used to determine allowable loads for intermediate compressive strengths.
 4. For lightweight concrete multiply tabulated allowable load values by a reduction factor of 0.60.



18 02022 DOWLAT - REV.F



TECHNICAL DATA & CERTIFICATIONS



Product Evaluation Report

Manufacture: Andersen Windows & Doors

Product : GTO Aluminum - Universal Aluminum Siding System & CLICK Profile Siding System

MECHANICAL ANCHORS

ULTRACON[®] +
Concrete Screw Anchor

Ultimate and Allowable Load Capacities for UltraCon+ Anchors Installed in the Face of Hollow Concrete Masonry^{1,2,3,4}



Nominal Anchor Diameter d in.	Minimum Embed. Depth h _{min} in. (mm)	Minimum Edge Distance in. (mm)	Minimum End Distance in. (mm)	Minimum Spacing in. (mm)	Minimum ASTM C90 Block Type	Ultimate Load		Allowable Load	
						Tension lbs. (kN)	Shear lbs. (kN)	Tension lbs. (kN)	Shear lbs. (kN)
3/16	1-1/4 (32)*	1 (25)	2 (51)	1-1/2 (38)	Normal Weight	725 (3.2)	405 (1.8)	145 (0.6)	80 (0.4)
	1-1/4 (32)			3 (76)	Normal Weight	750 (3.3)	585 (2.6)	150 (0.7)	115 (0.5)
	1 (25)	2 (51)	2 (51)	1-1/2 (38)	Lightweight	300 (1.3)	460 (2.1)	55 (0.3)	90 (0.4)
	1 (25)			3 (76)	Lightweight	340 (1.5)	460 (2.1)	65 (0.3)	90 (0.4)
	1-1/4 (32)			1-1/2 (38)	Normal Weight	740 (3.3)	700 (3.1)	150 (0.7)	140 (0.6)
	1-1/4 (32)			1-1/8 (29)	Normal Weight	775 (3.4)	935 (4.1)	155 (0.7)	185 (0.8)
	1-1/4 (32)	2-1/2 (64)	2-1/2 (64)	2-1/4 (57)	Normal Weight	775 (3.4)	935 (4.1)	155 (0.7)	185 (0.8)
	1 (25)			1-1/2 (38)	Lightweight	385 (1.8)	670 (3.0)	80 (0.4)	135 (0.6)
	1 (25)	3 (76)	3 (76)	3 (76)	Lightweight	440 (2.0)	670 (3.0)	90 (0.4)	135 (0.6)
	1/4	1-1/4 (32)	1 (25)	2 (51)	1-1/2 (38)	Normal Weight	775 (3.4)	475 (2.1)	155 (0.7)
1-1/4 (32)		3 (76)			Normal Weight	775 (3.4)	800 (3.5)	155 (0.7)	160 (0.7)
1 (25)		2 (51)	2 (51)	2 (50)	Lightweight	435 (1.9)	530 (2.4)	90 (0.4)	105 (0.5)
1 (25)				4 (102)	Lightweight	495 (2.2)	530 (2.4)	100 (0.4)	105 (0.5)
1-1/4 (32)				2 (51)	Normal Weight	760 (3.4)	740 (3.3)	150 (0.6)	150 (0.7)
1-1/4 (32)				1-1/2 (38)	Normal Weight	800 (3.5)	1,200 (5.3)	160 (0.7)	240 (1.1)
1-1/4 (32)		2-1/2 (64)	2-1/2 (64)	3 (76)	Normal Weight	880 (3.9)	1,450 (6.4)	175 (0.8)	290 (1.3)
1 (25)				2 (51)	Lightweight	510 (2.3)	820 (3.6)	100 (0.4)	165 (0.7)
1 (25)		3 (76)	3 (76)	4 (102)	Lightweight	580 (2.6)	820 (3.6)	115 (0.5)	165 (0.7)

1. Tabulated load values are for anchors installed in minimum 8-inch-wide, Type II, light weight or normal weight concrete masonry units conforming to ASTM C90 that have reached the minimum designated ultimate compressive strength at the time of installation (f_m ≥ 2,000 psi). Mortar must be Grade N.S or M.
2. Allowable load capacities listed are calculated using an applied safety factor of 5.0. Consideration of safety factors of 10 or higher may be necessary depending on the application, such as life safety or overhead.
3. Allowable shear loads into the face shell of a masonry wall may be applied in any direction.
4. The tabulated values are applicable for anchors installed into the ends of concrete masonry units (e.g. wall opening) where minimum edge distances are maintained.

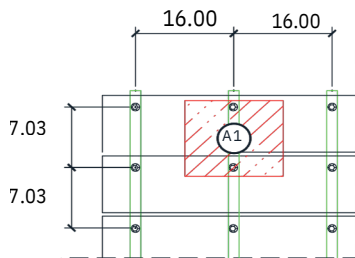


TECHNICAL DATA & CERTIFICATIONS



Product Evaluation Report

Anchor Capacity Calculations: X - Universal 140 Profile



Size: 0.78 ft²

Design pressure: 70.0 psf

Zone	Area (ft ²)
A1	0.78

Minimum Anchor Capacity per Substrate:			
Anchor Type	Tension Load Capacity		
#8 Wood Screw	26	lbs	/ anchor
#8-32 Self-Drilling Screw	3	lbs	/ anchor
3/16" ITW Tapcon	12	lbs	/ anchor

9

Anchor Capacity Calculations: X - Universal 140 Profile

Design pressure: 70.0 psf

Zone	Area (ft ²)	Tension Load (lbs)	Min. Anchor Capacities		
			Shear Cap. (lbs)	Tension Cap. (lbs)	Spacing (in)
A1	0.78	55	N/A	129	5.5

Installation:

Wood: Install #8 Wood Screw Anchors with 5.5" O.C. spacing on each stud.

Steel/ADM: Install #8-32 Self-Drilling Screw anchors with 5.5" O.C. spacing on each stud.

Concrete: Install 3/16" DeWalt Ultracon anchors at 3.00" Min. from the corners with 5.5" O.C. spacing.